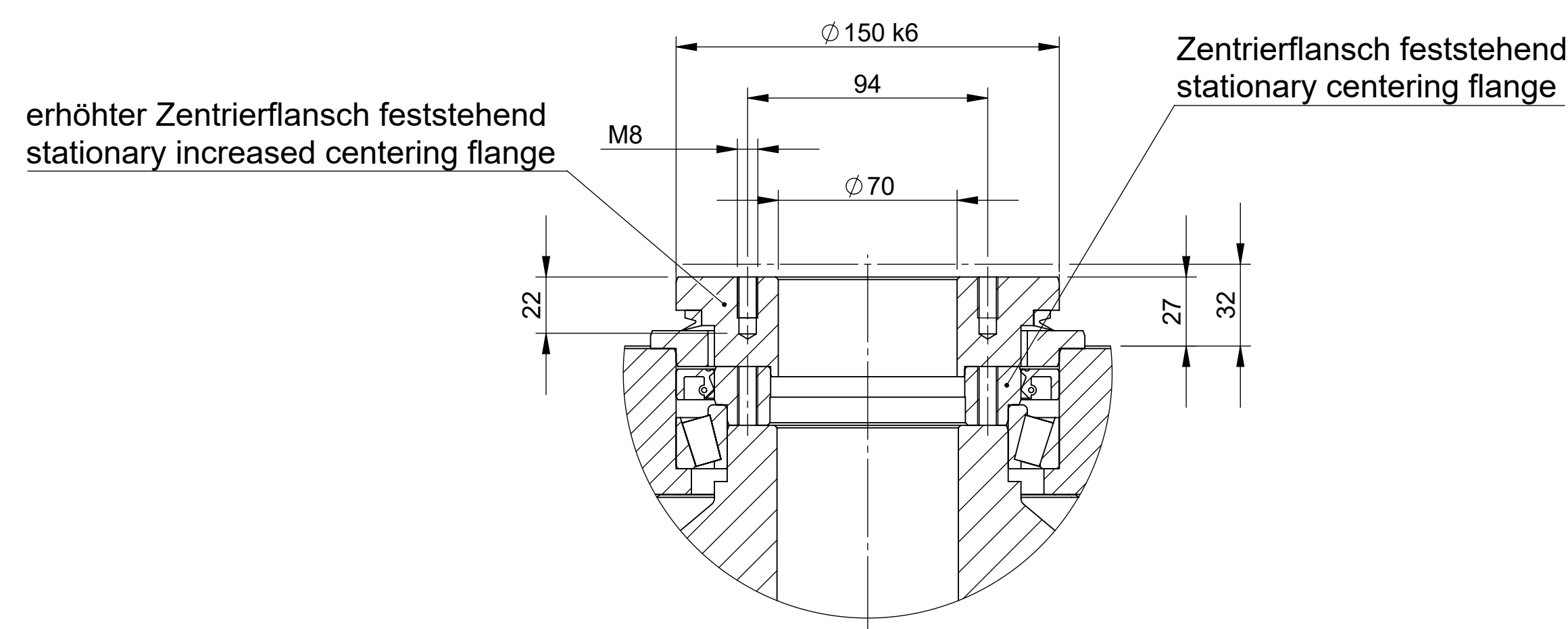
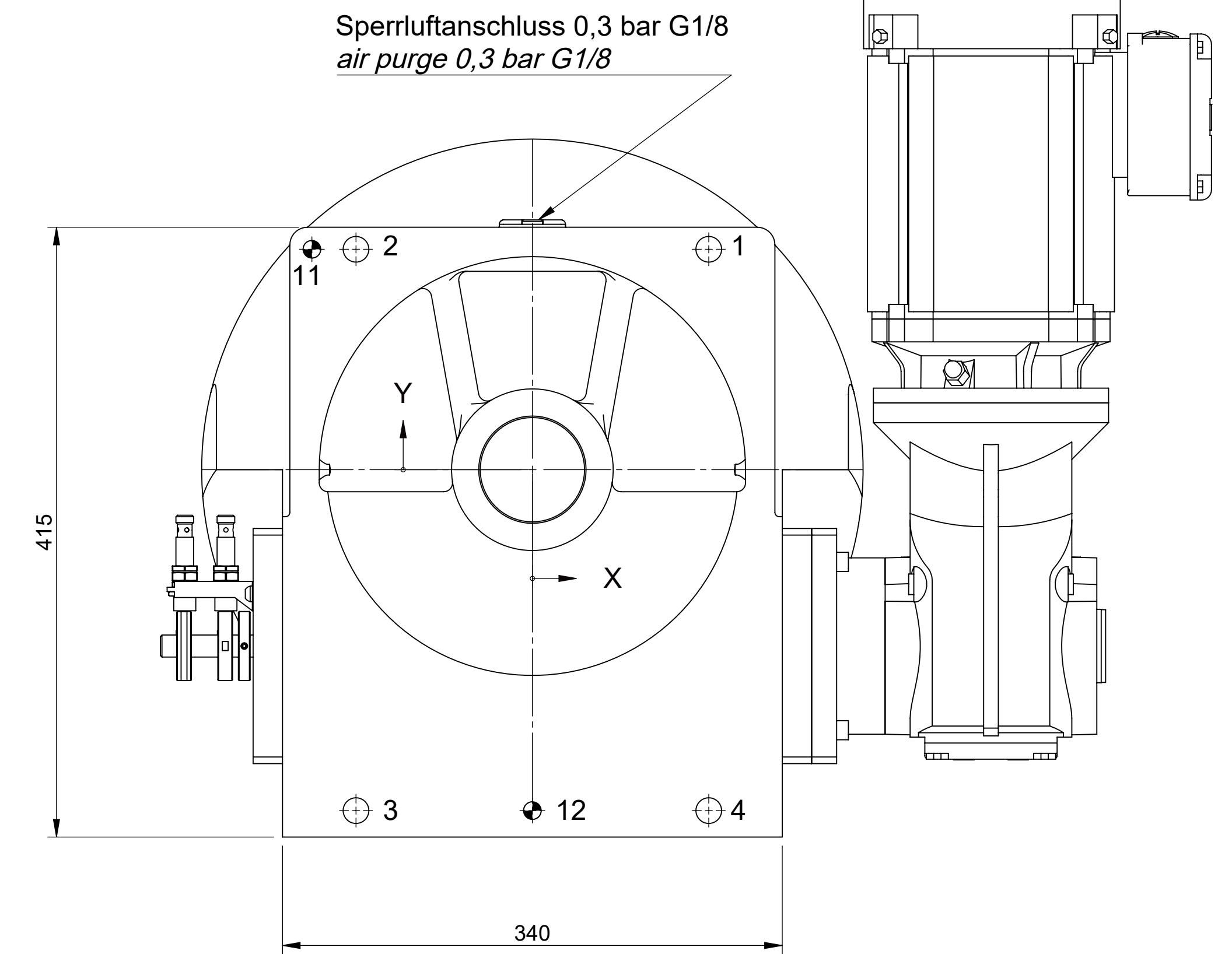
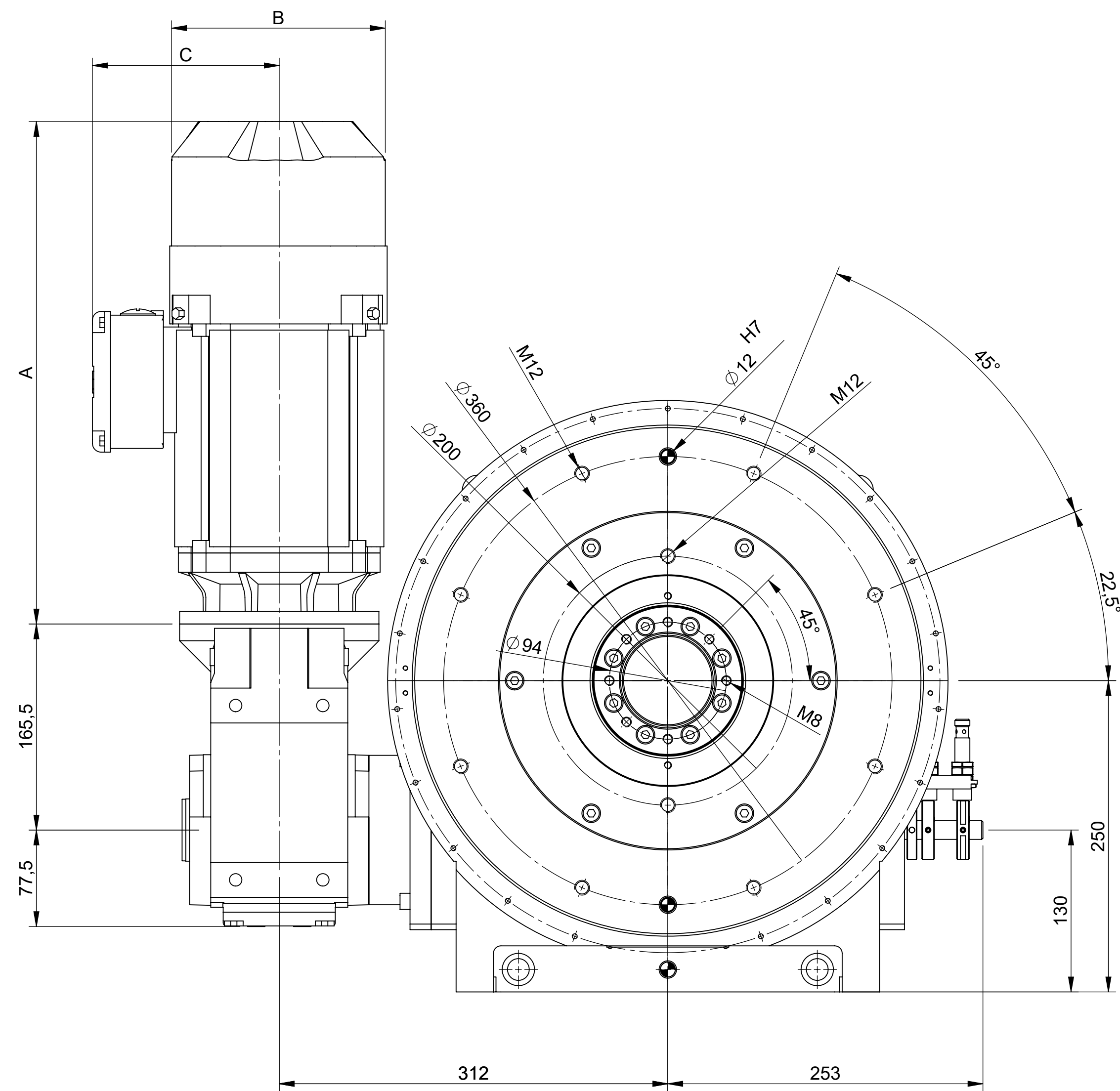
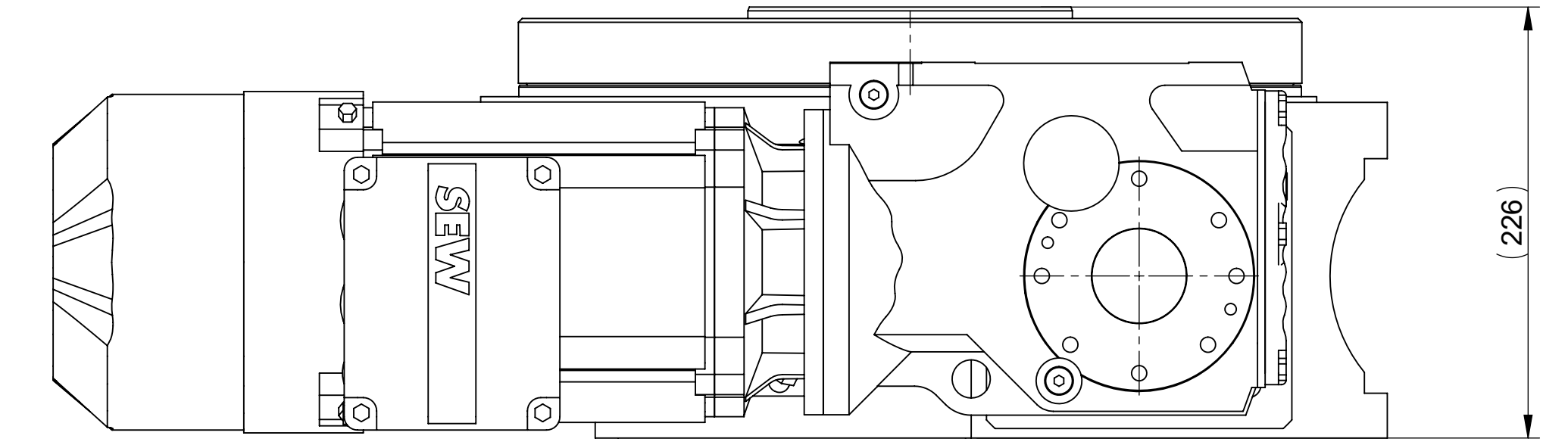
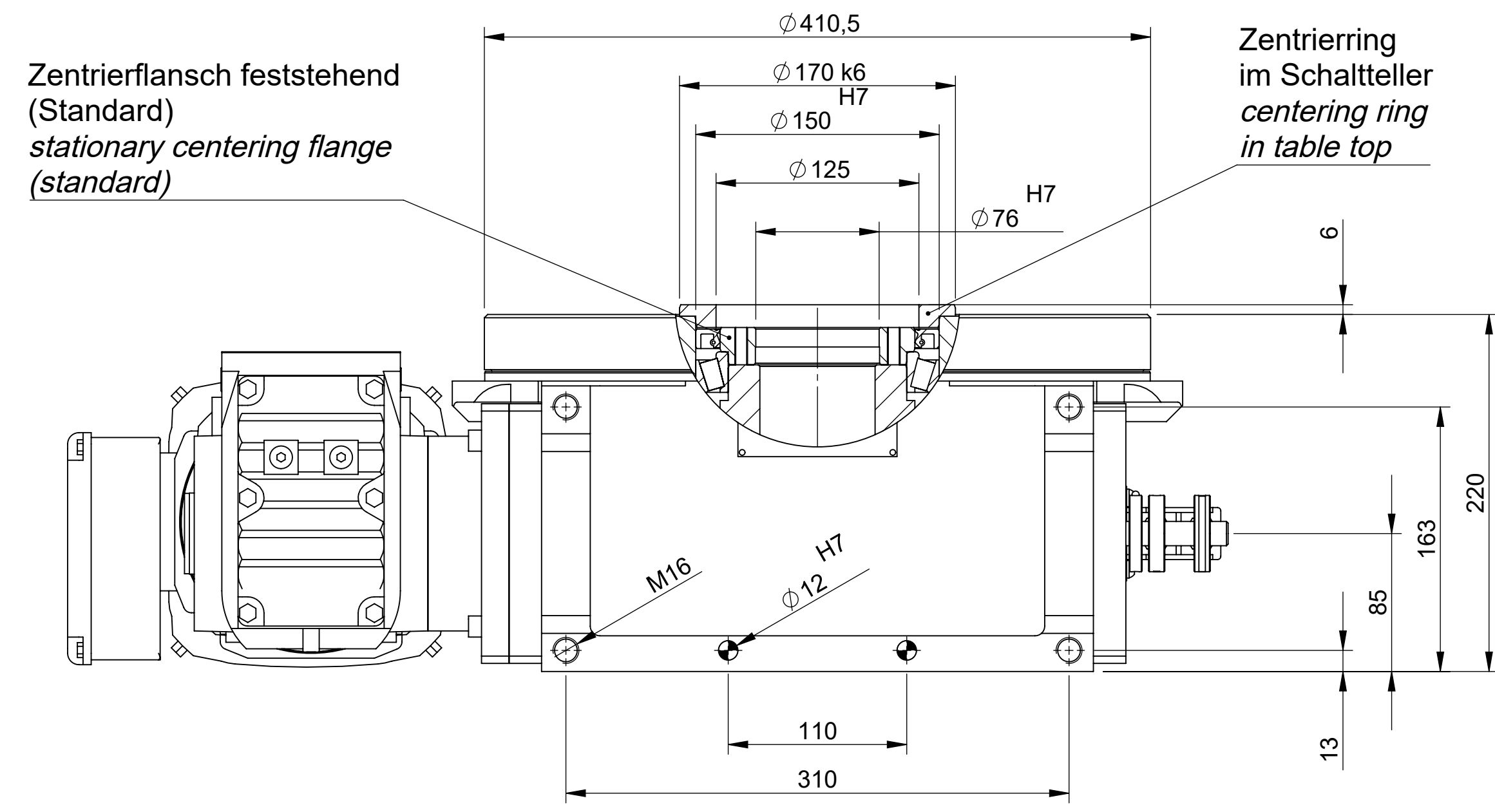
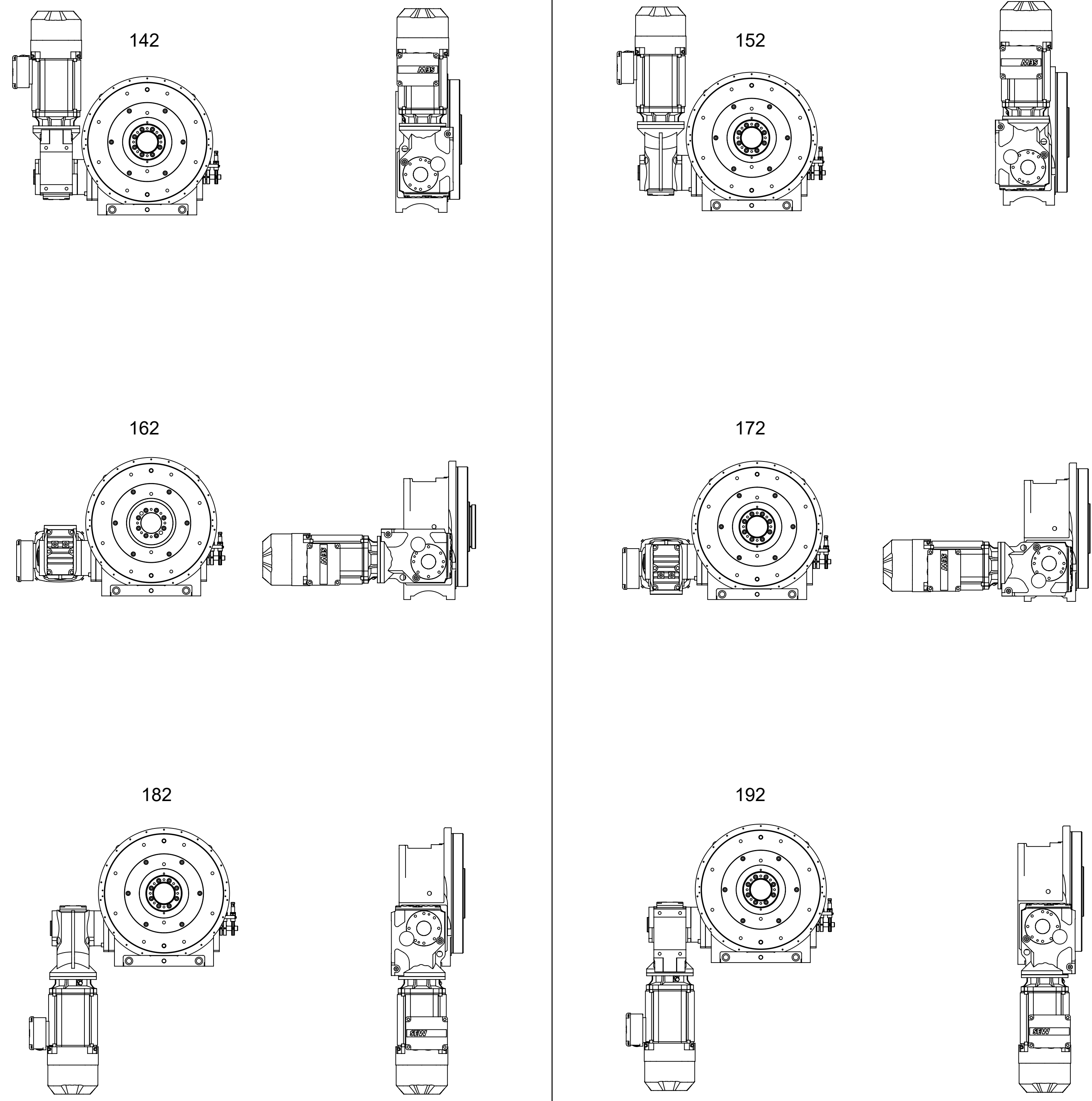


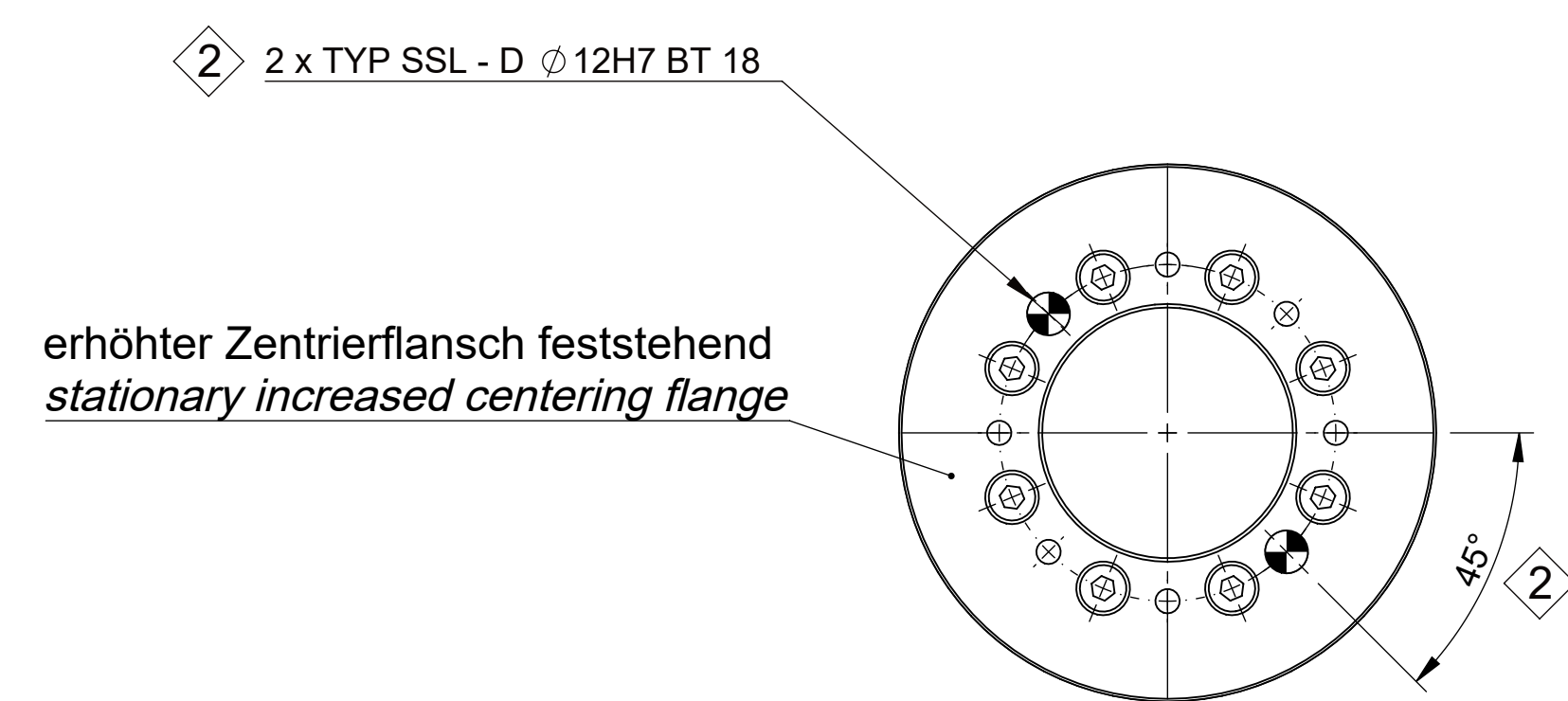
Mögliche Antriebsanordnungen KA47 / possible drive arrangements KA47



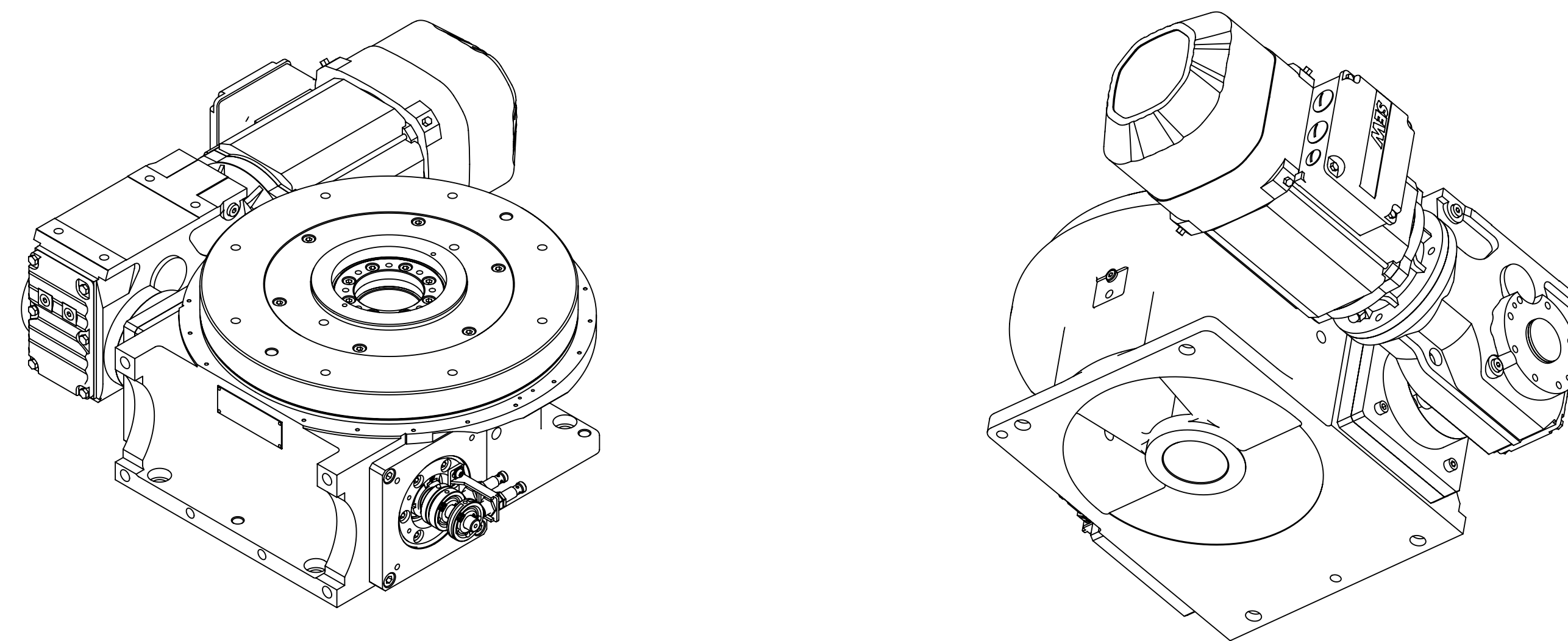
MASSSTAB / SCALE 1 : 2

Motor Typ	A	B	C
71MS4	267	139	129
71M4	295	139	129
80MK4	311	156	139
80M4	356	156	139
90S4	370	179	150
90L4	402	179	150

Pos.	X	Y	Beschreibung / Description
1	120	150	TYP S - D1 $\varnothing 17,5$ (BT 22) - D2 $\varnothing 26\text{ T } 12 - \varnothing 0,2$
2	-120	150	
3	-120	-232	
4	120	-232	
11	-150	150	TYP SDF - D1 $\varnothing 12\text{H7}$ (BT 22) - D2 $\varnothing 14 - \varnothing 0,02$
12	0	-232	



MASSSTAB / SCALE 1 : 2



Bildliche Darstellung unverbindlich  
not binding scheme  
ce tableau de mesures reste sans engagement

Technische Änderungen vorbehalten  
technical alterations reserved  
sous reserves demodifications technique

<b>FIBRO</b>		Unbenutzte Kanäle gebrochen Break off unused channels	Projektor / Projection DIN ISO 128-93	Gewicht / Weight 117,68 kg	Format A0	Modul / Scale 1:3
BEACHTEN / NOTICE DIN ISO 14652/12 ISO 14652		Urspr. Zeichnung / Source drawing	Werkstoff / Material		FIBROTOR BMZ	
Allgemeininformationen General information DIN ISO 2284-1-1		Datum Date	Name Name		Bezeichnung / Designation / Description	
Abg. / Rev. 4 30/21 400 1000000		Dr. / Dr. 11.03.2019	Zust. Zust.		FIBROTOR assembly drawing	
13.10.2023 10:51:12 11.2.2021		11.07.2022	Cebel, Anja		EMER.15.0410.1.142.XX.0.0.X	
Oberfläche / Surface DIN ISO 1302		FIBRO GmbH Waldenstrasse 41-43 D-74189 Waldenrot T +49 7134 / 73-0 F +49 7134 / 73-218		Artikel-Nr. / Article code 4-815-000-3000		Blatt / Sheet 1 von / of 1