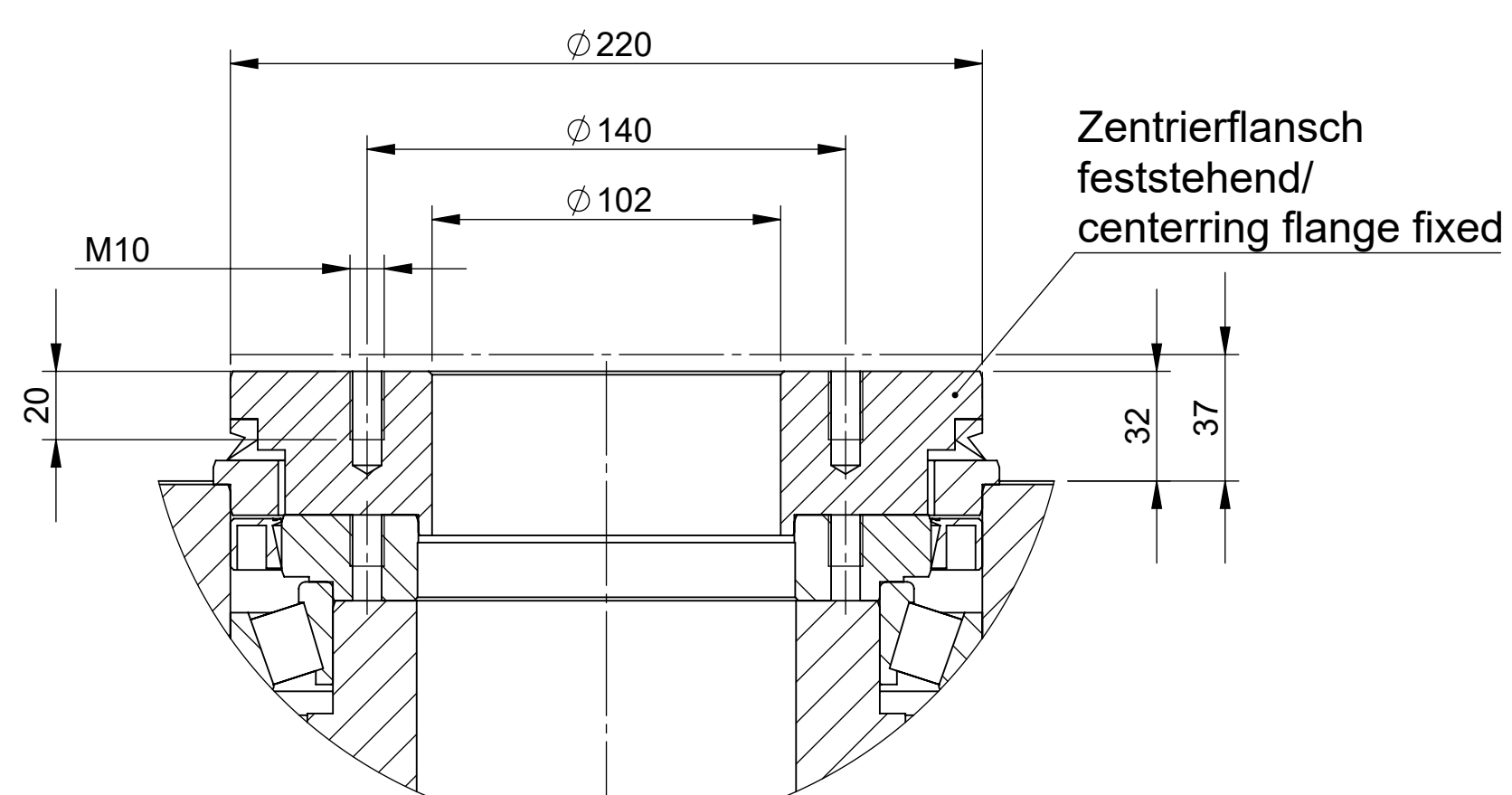
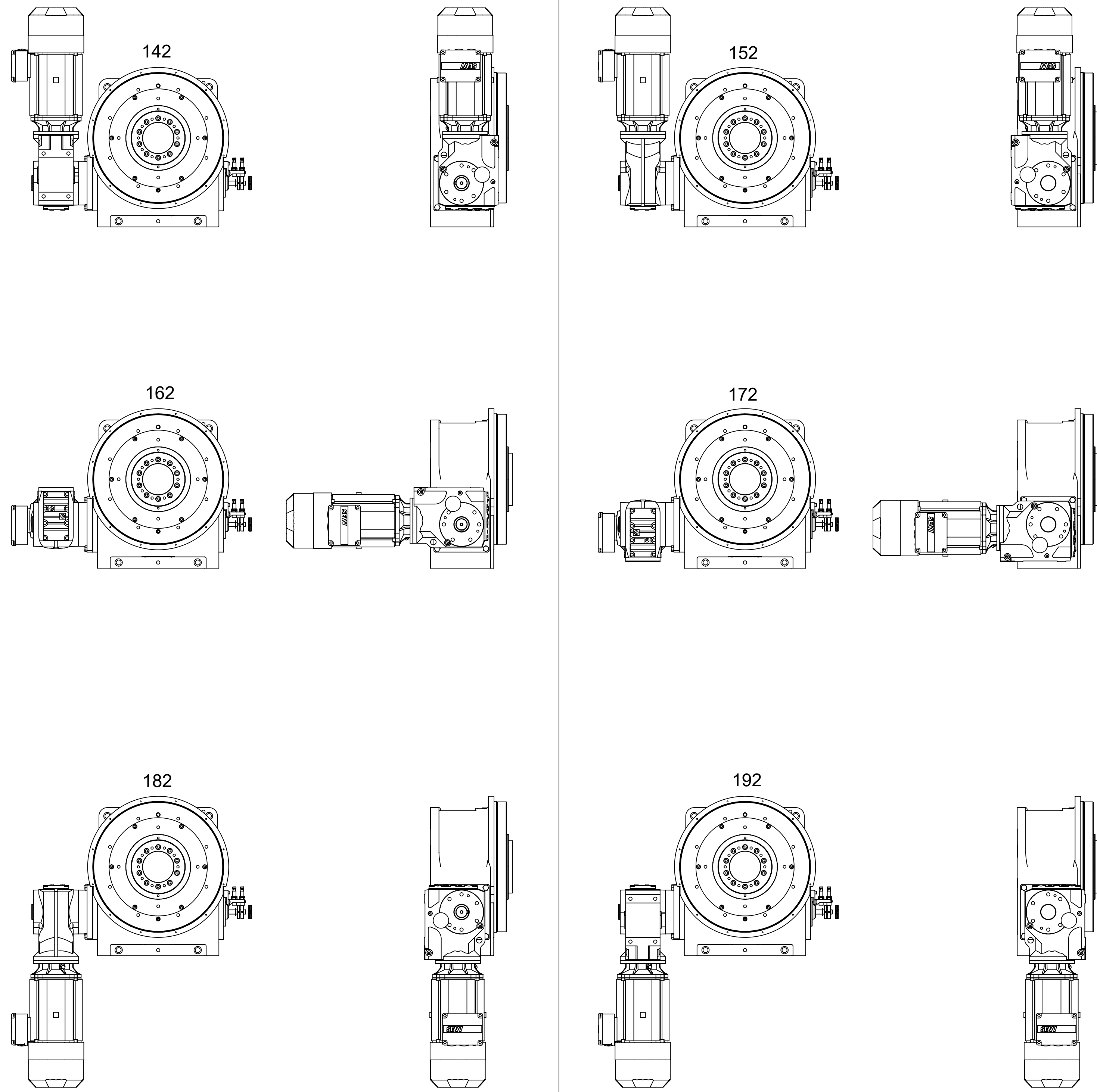
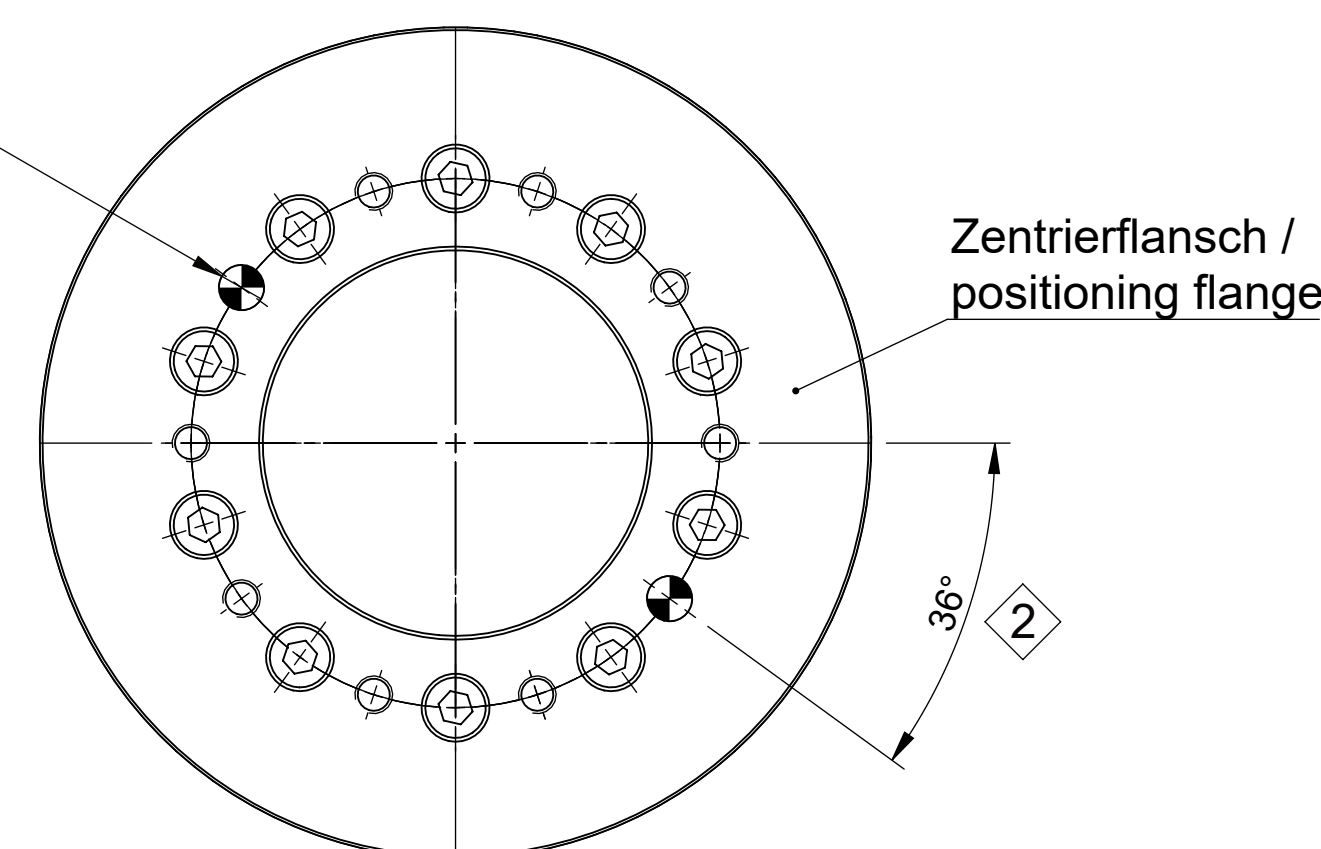


Mögliche Antriebsanordnungen KA57 / possible drive arrangements KA57

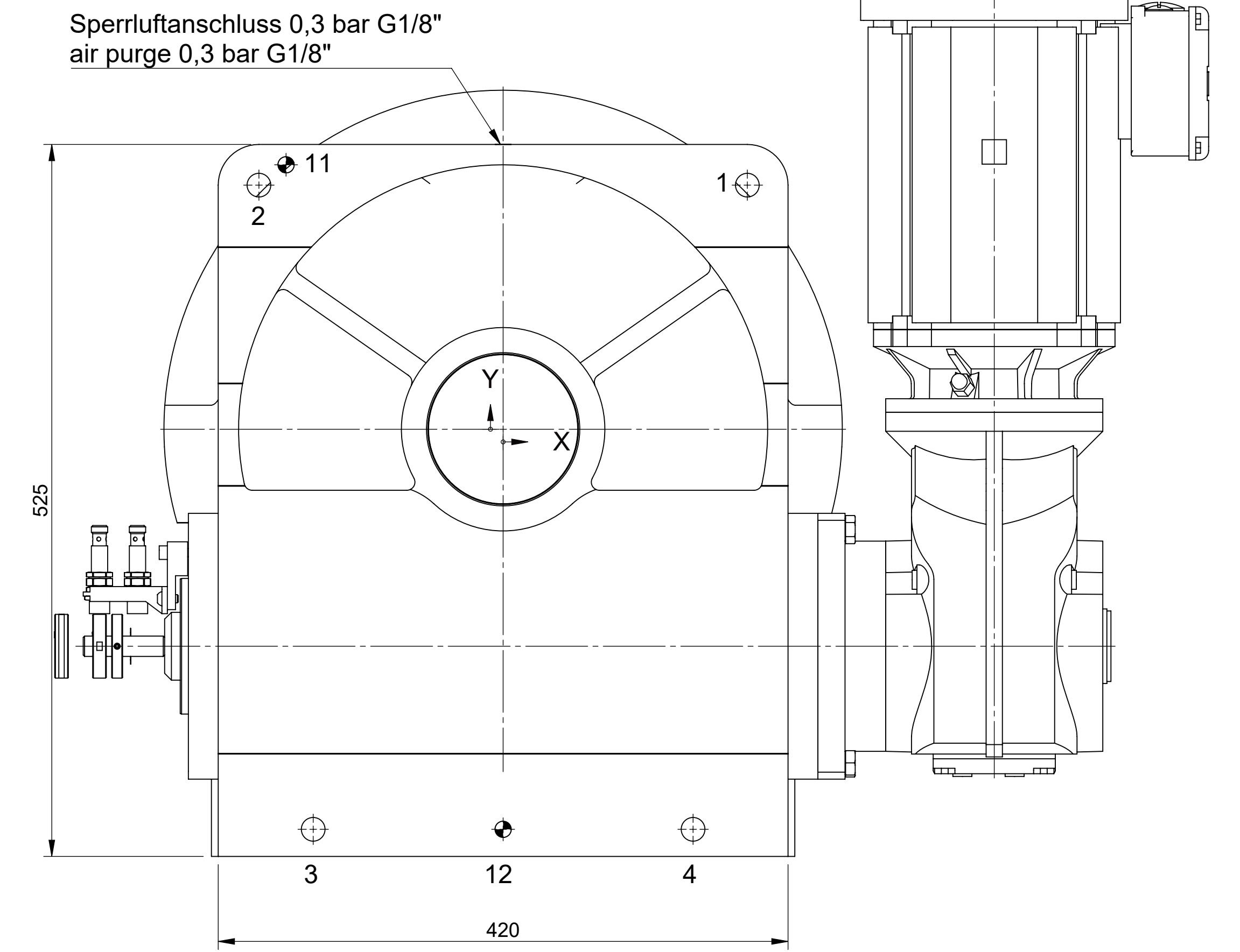
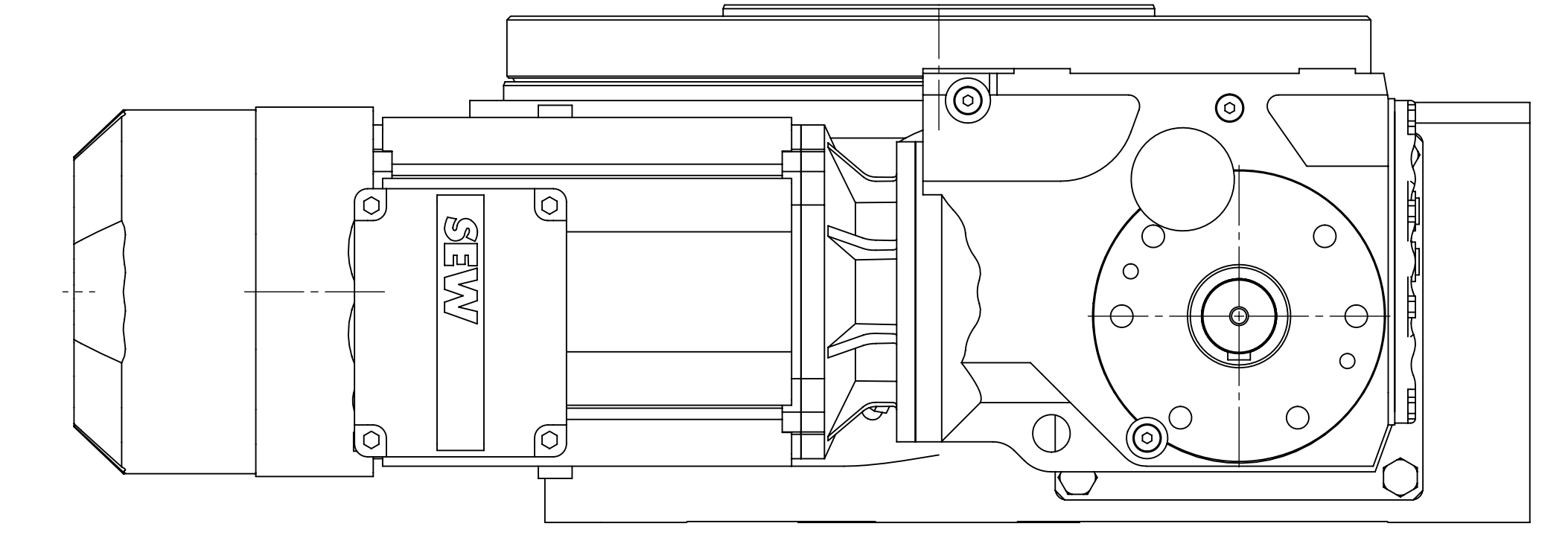
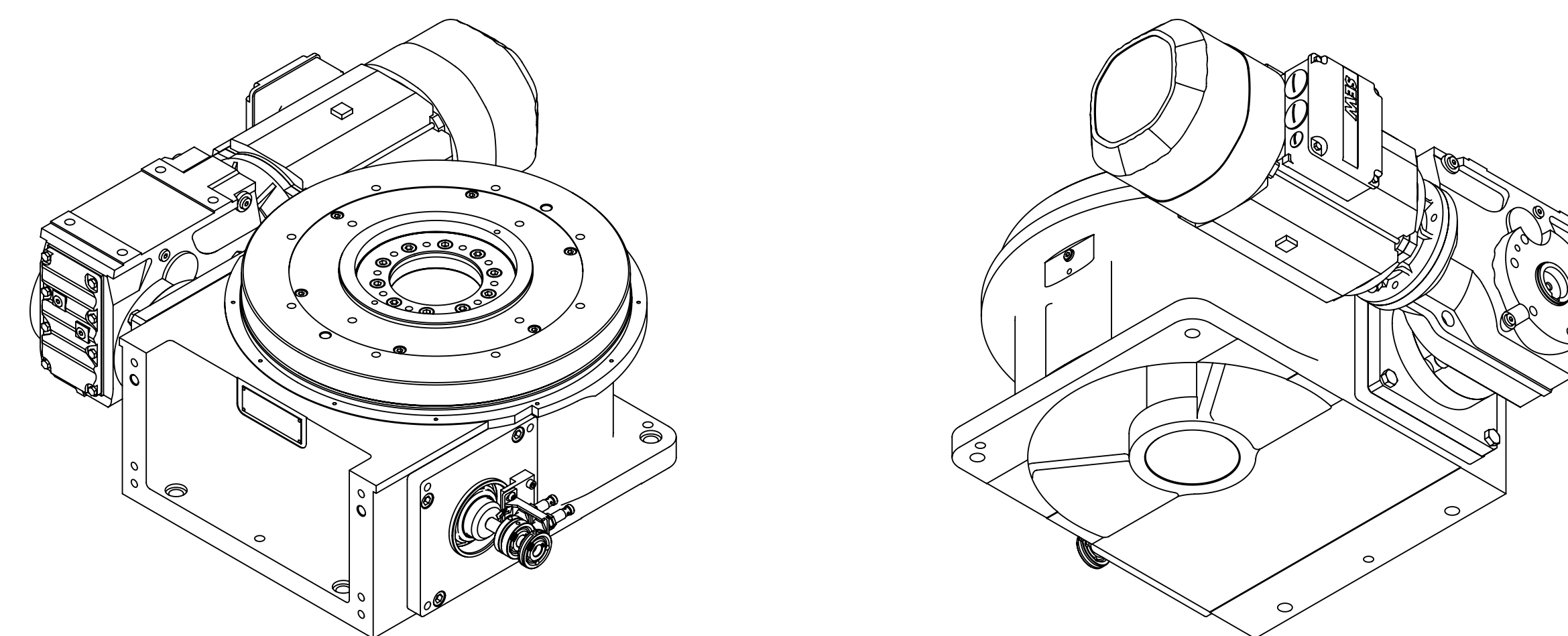
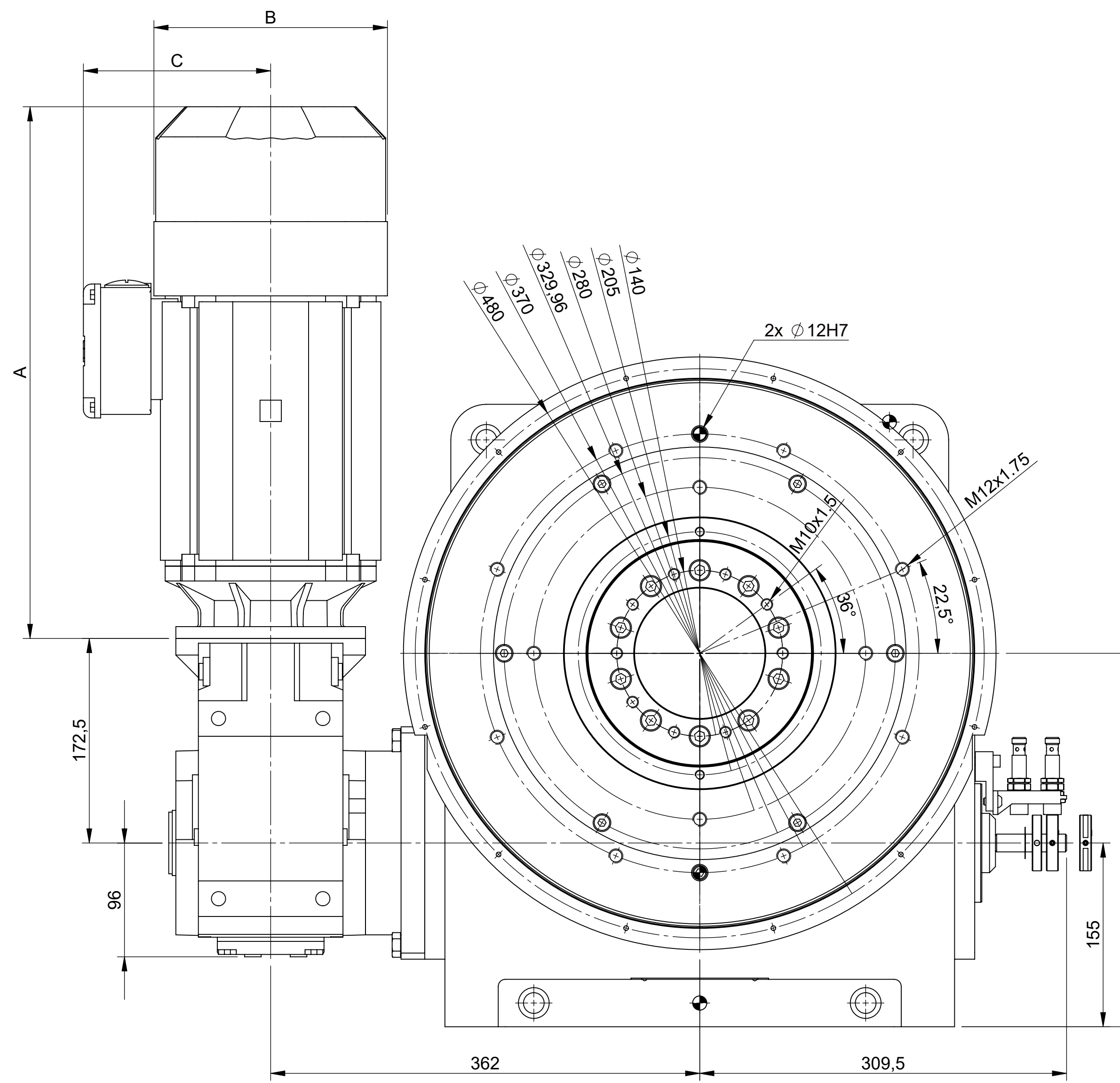
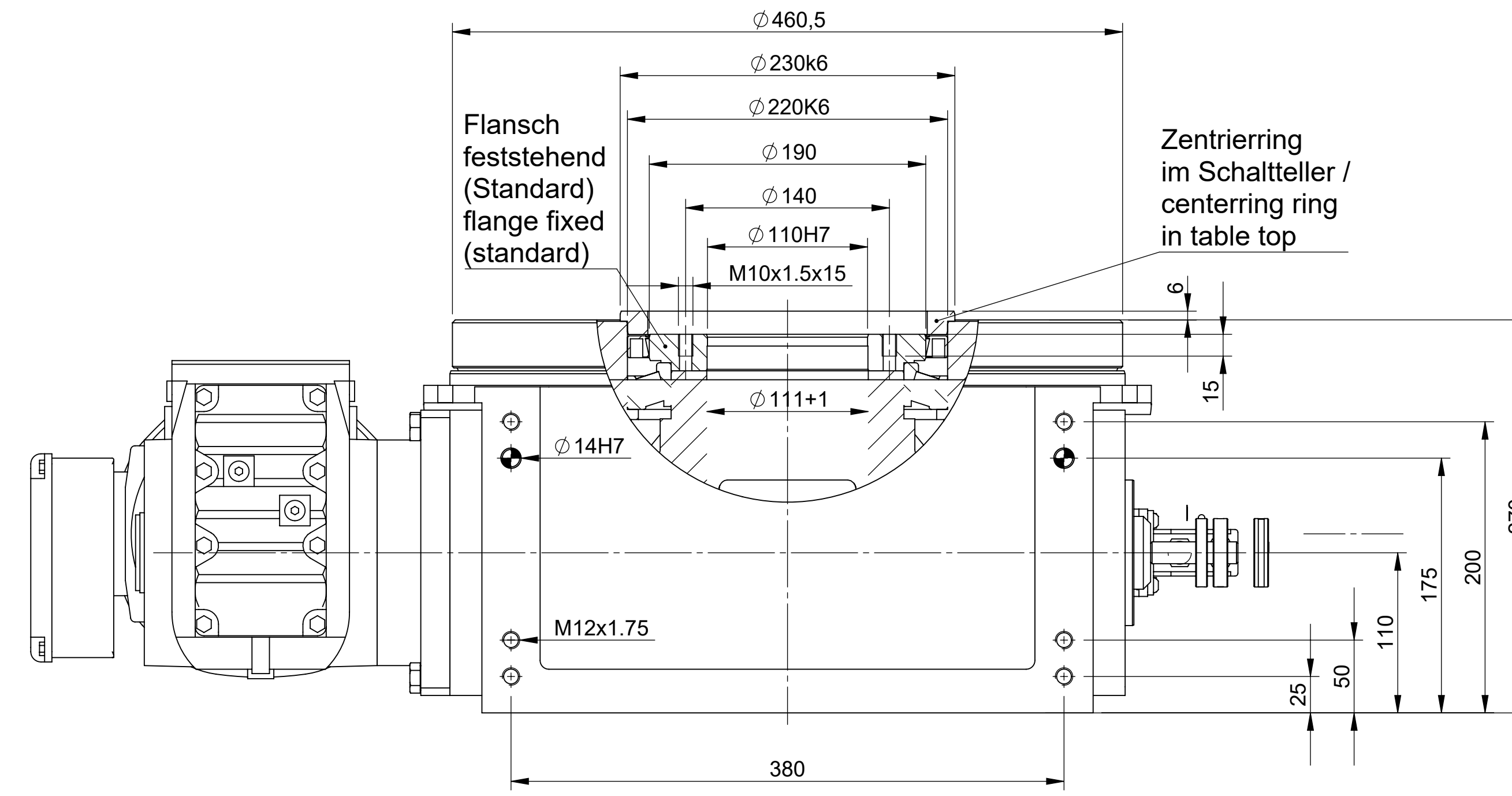


Maßstab / Scale 1:2

2 x TYP SSL - D \varnothing 12H7 BT 18



Maßstab / Scale 1:2



Motor Typ	A	B	C
71M4	295	139	129
80MK4	311	156	139
80M4	356	156	139
90S4	370	179	150
90L4	402	179	150
100LM4	449	197	158

Pos.	X	Y	Beschreibung / Description
1	180	180	
2	-180	180	
3	-140	-295	TYP S - D1 \varnothing 17,5 (BT 30) - D2 \varnothing 26 T 5 - \varnothing 0,2
4	140	-295	

Pos.	X	Y	Beschreibung / Description
11	-160	195	TYP SSL - D \varnothing 12H7 BT 30,001 - \varnothing 0,02
12	0	-295	

Bildliche Darstellung unverbindlich
 no binding scheme
 ce tableau de mesures reste sans engagement

Technische Änderungen vorbehalten
 Technical alterations reserved
 Sous réserves de modifications techniques

FIBRO Unberührte Konen gebrochen / Break off rings broken
 DIN ISO 14450-12 0,4 x 45°
 Urspr. Zeichnung / Source drawing

Projektor / Projection
 DIN ISO 128-38
 Werkstoff / Material

Modell / Scale
 1:3

Rechnung / Designation /
FIBROTOR BMZ
FIBROTOR assembly drawing
ER.16.0460.1.142.XX.0.0.X

FIBRO GmbH
 Weidenstrasse 41-43
 D-74189 Weidenburg
 T +49 7134 733 0
 F +49 7134 733 218

Artikel-Nr. / Article code
4-816-000-3000

Blatt / Sheet 1 von / of 1