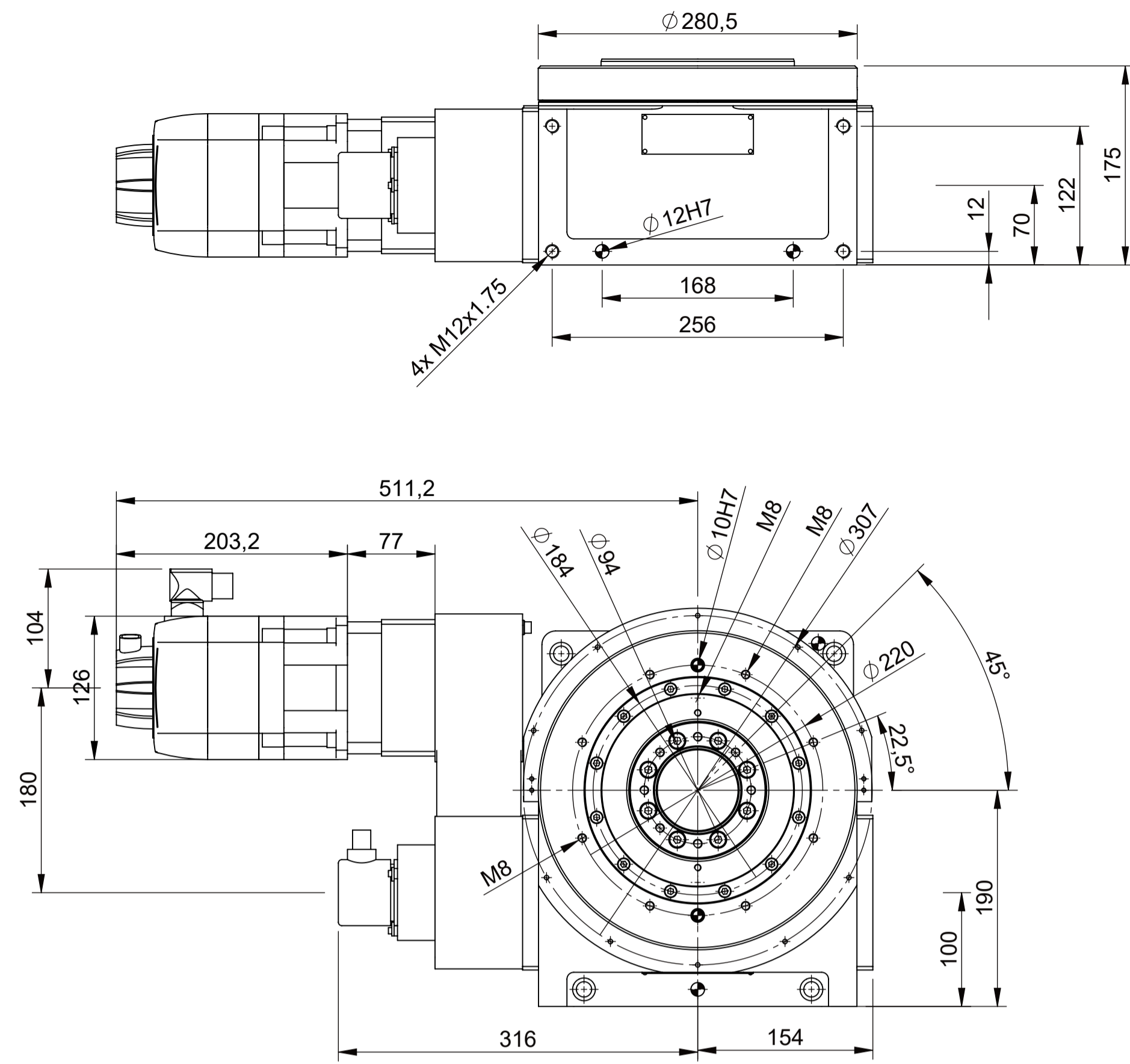
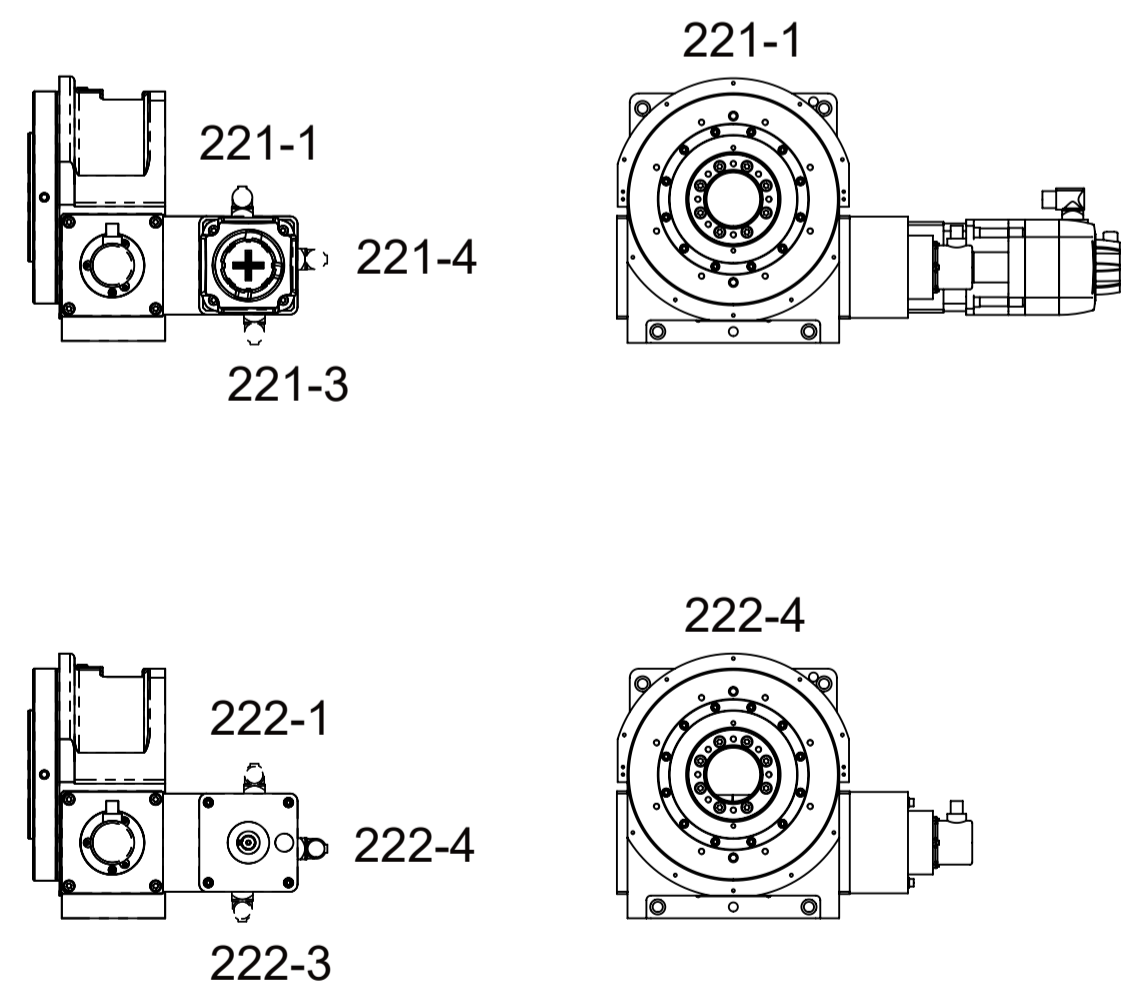
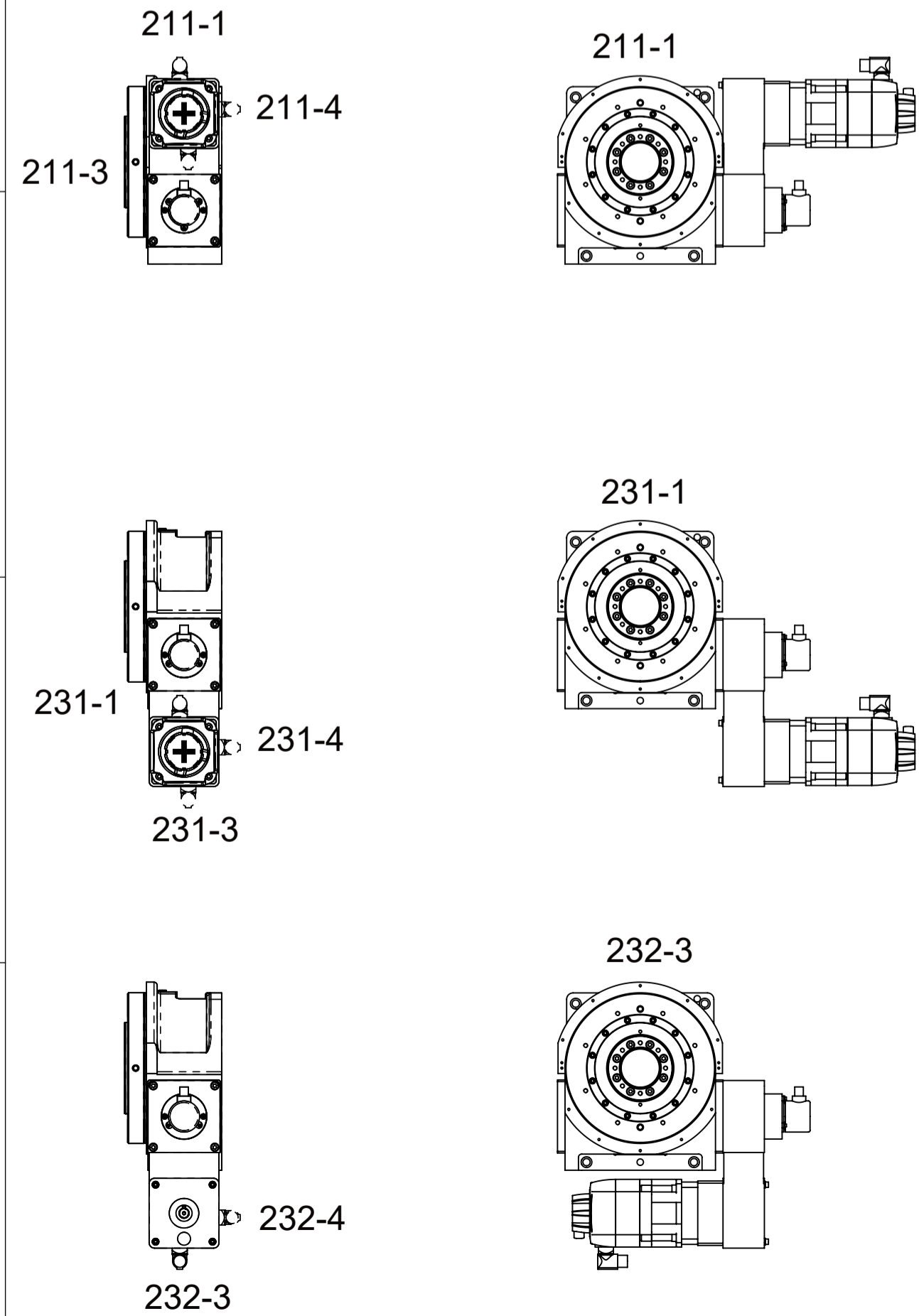
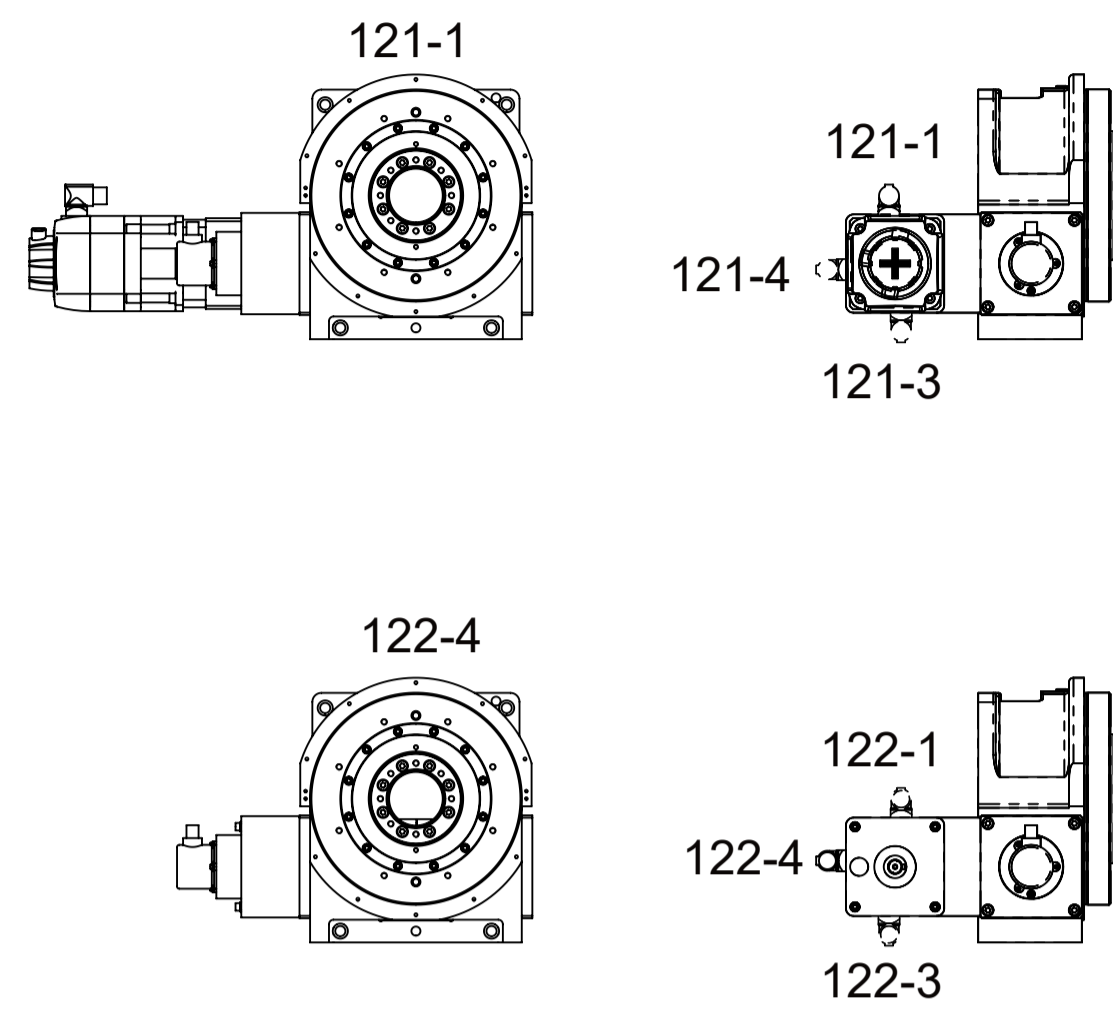
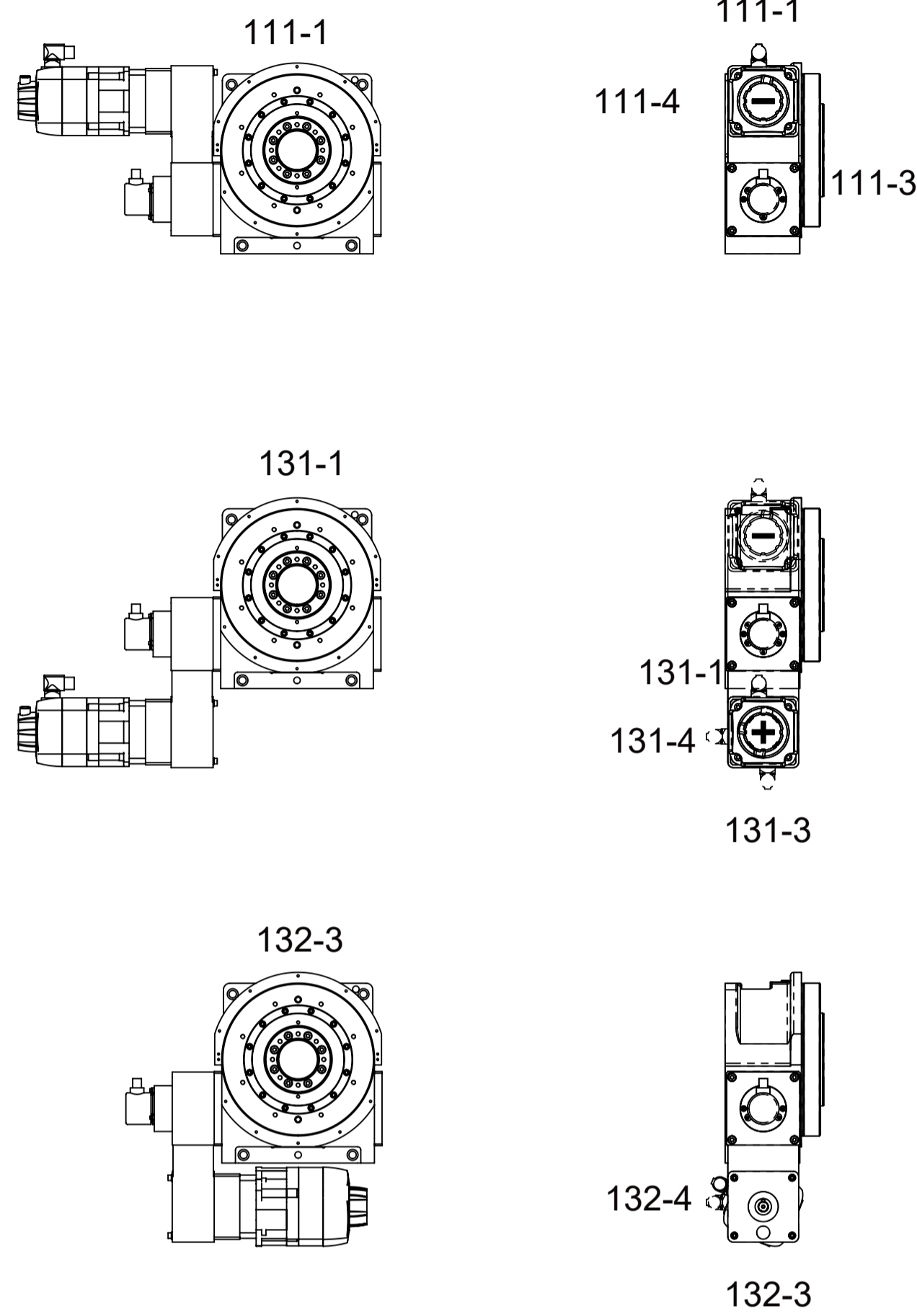
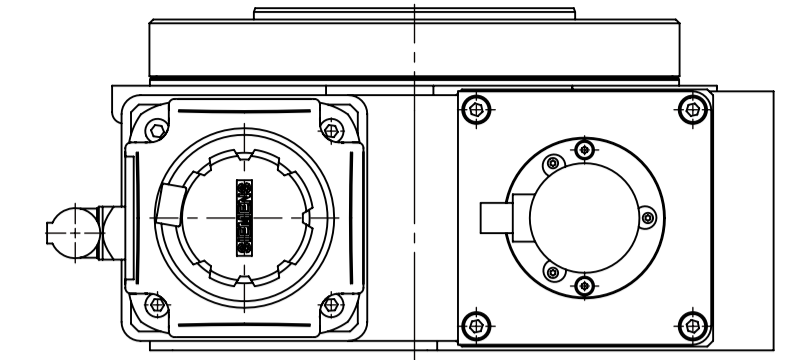


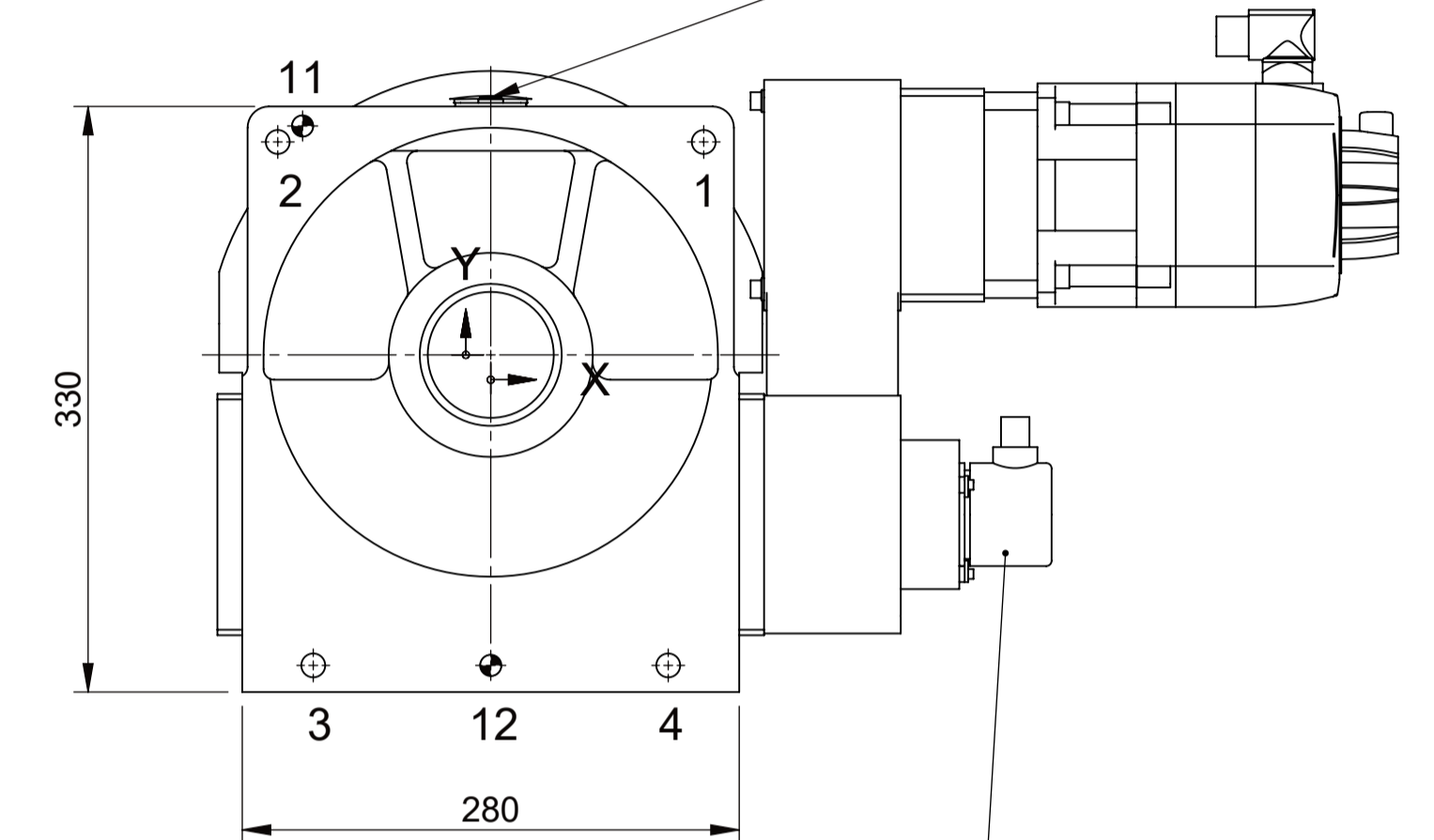
Mögliche Antriebsanordnungen / possible drive arrangements



Pos.	X	Y	Beschreibung / Description
1	120	120	TYP S - D1 Ø 13,5 (BT 23) - D2 Ø 20 T 3 - \pm 0,2
2	-120	120	
3	-100	-175	
4	100	-175	

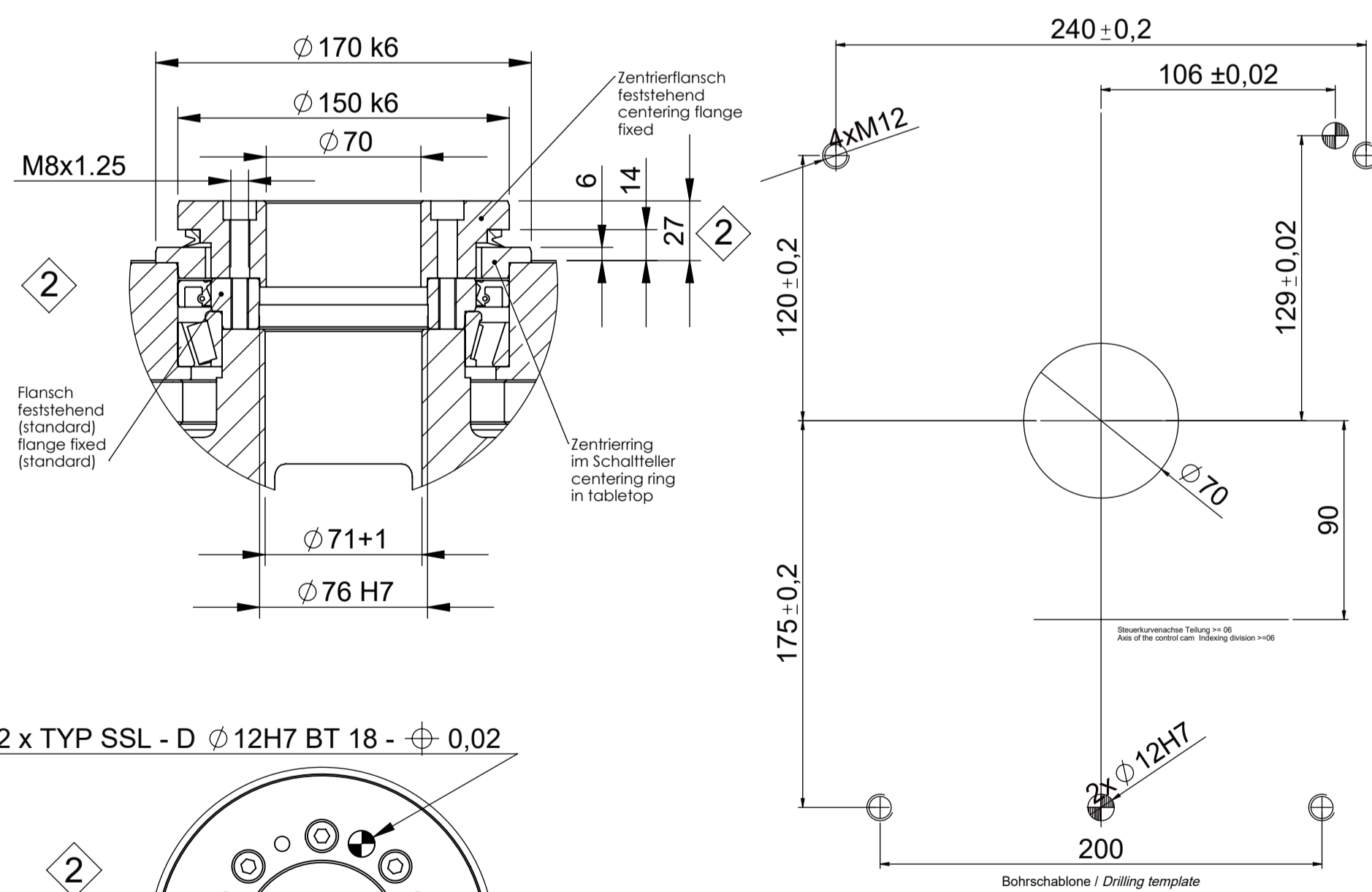


Sperrluftanschluss 0,3 bar G1/8
air purge 0,3 bar G1/8

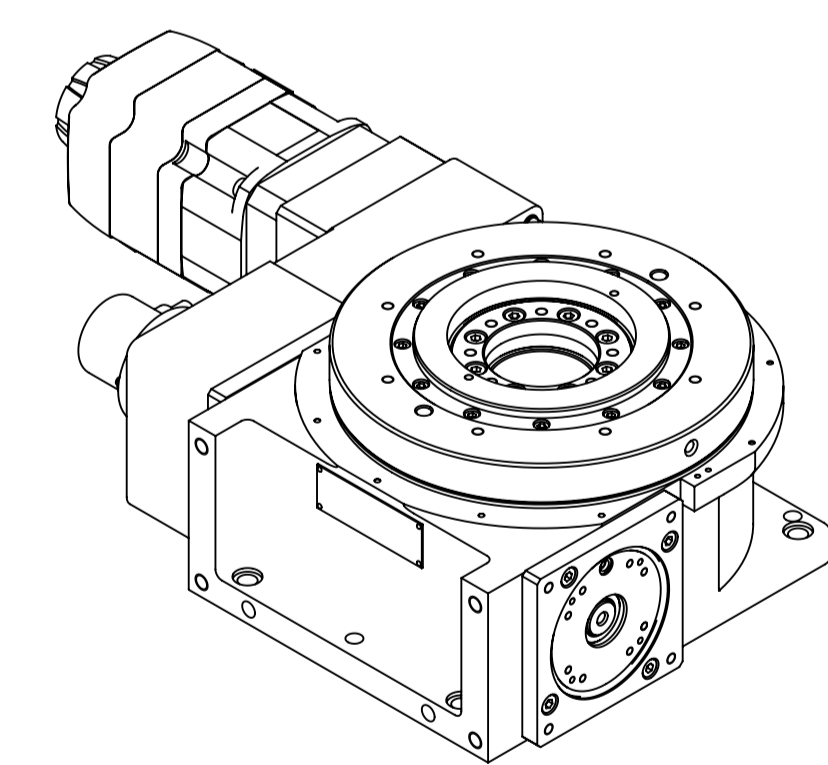
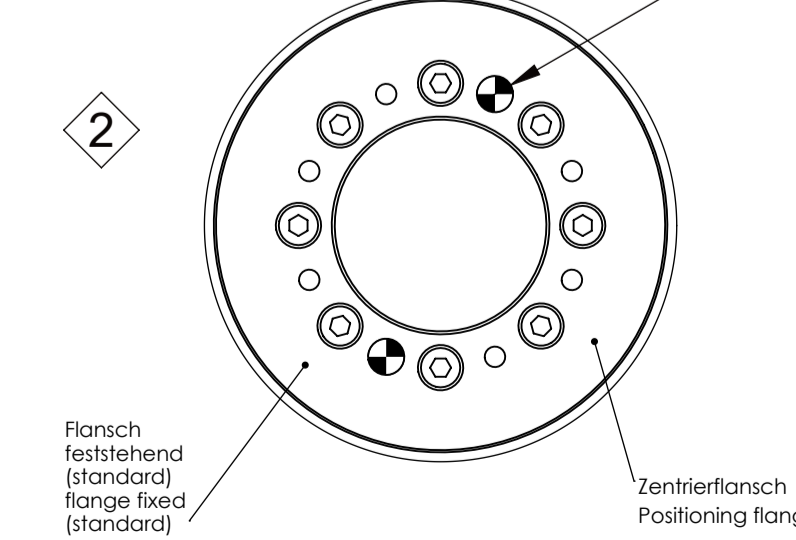


Drehgeber/Messsystem Optional
encoder optional

Pos.	X	Y	Beschreibung / Description
11	-106	129	TYP SSL - D Ø 12H7 BT 23 - \pm 0,03
12	0	-175	



2 x TYP SSL - D Ø 12H7 BT 18 - \pm 0,02



Bildliche Darstellung unverbindlich
not binding scheme
ce tableau de mesures reste sans engagement

Technische Änderungen vorbehalten
Technical alterations reserved
Sous reserves de modifications techniques

FIBRO		Unberabte Kanten gebrochen Break all sharp corners	Projektion / Projection DIN ISO 128-30	Gewicht / Weight kg	Format DIN A1	Maßstab / Scale 1:5
BEACHTEN / NOTICE DIN ISO 14661 & 2007-12 ISO 14405-1		Urspr. Zeichnung / Source drawing	Werkstoff / Material			
Allgemeintoleranzen General tolerances DIN ISO 2768 mH		Datum Date	Name Name			
> 6 30 120 400 1000 2000		Bearb. Dr. by	17.04.2018 Baberske, Michelle			
bis 0,1 0,2 0,3 0,5 0,8 1,2 2,0		Freig. APP	04.04.2024 Cebe, Arzu			
Oberfläche / Surface DIN-ISO 1302		Bezeichnung 1 / Designation 1 FIBROTOR BMZ				
FIBRO Rundische GmbH Weidachstrasse 41-43 D-74189 Weinsberg T +49 7134 / 73-0 F +49 7134 / 73-218		Zeichen / Sign Rz bem. genietet / overage		100 63 25 16 10 4		Bezeichnung 2 / Designation 2 EM.NC.13.0280.7.111.00.0.X
Artikel-Nr. / Article code 4-813-928-00NC		Blatt / Sheet 1 von / of 1		Index Rev. 2		

